

CMC SERIES COMMERCIAL INDOOR LIGHTING



CMC6S-MCTP-DD-WH
CMC6S-MCTP-DD-BK

MCTP Multi Color Temperature & Multi Power/Wattage (Selectable)

Customer Name: _____

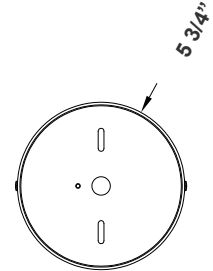
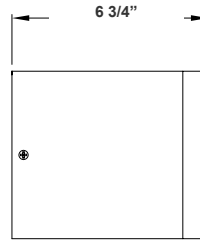
Project Name: _____

Note: _____ Type: _____



Shown With Suspension cable

Avail Finish:



6 3/4"(H) X 5 3/4" (D)

6" Cylinder, Pendant & Ceiling Cylinder Light, Aluminum Cylinder, White Aluminum Housing, Clear Glass Lens

Features

- Multi CCT: Selectable Multi-CCT & Power Switches on the back of the fixture(Dual Function)
- Triac Dimmable at 120V & 0-10V Dimming at 120-277V
- 5-Year Warranty
- Aluminum Base and Glass Lens

Technical Specifications

Electrical:

- Voltage: 120-277V
- Power Factor: >0.90
- THD: <20%
- Wattage: 18W/24W/30W
- Efficacy: 80 LPW

Mechanical:

- Aluminum Housing & Glass Lens
- Suspension Cable & Canopy Set Accessories Avail.
- Universal Swivel W/ Rod Kit Accessories Avail. Ambient Operating Temperature: -13°F to 113°F
- $0.9 \text{ PF} \times 120 \text{ V} \times 1.5 \text{ A} = 162 \text{ W}$
- $1 \text{ W} \times 80 \text{ LPW} = 80 \text{ LM}$

Lighting:

- Dimming: (Dual Function) Triac Dimmable at 120V & 1-10V Dimming at 120-277V
- Total Lumens: 2400LM Max.
- Color Temperatures: 3000K/ 4000K/ 5000K
- Color Rendering Index: CRI \geq 80
- Beam Angle: 25°
- Rated life: 50,000 hrs

Applications:

- 6" Cylinder, Pendant & Ceiling Cylinder Light, Aluminum Cylinder, White Aluminum Housing, Clear Glass Lens

Other Models:

- 6W | 450LM | CMC2-MCT-DT-WH
- 6W | 450LM | CMC2L-MCT-DT-WH
- 9W | 675LM | CMC3-MCTP-DD-WH
- 15W | 1125LM | CMC4-MCTP-DD-WH
- 6W | 450LM | CMC2-MCT-DT-BK
- 6W | 450LM | CMC2L-MCT-DT-BK
- 9W | 675LM | CMC3-MCTP-DD-BK
- 15W | 1125LM | CMC4-MCTP-DD-BK



Phone: (877) 805-2252 | Fax: (877) 805-2252
www.westgatemfg.com



Other Views:

BLACK:



Side View



Lens View



Back View

WHITE:



Side View



Lens View



Back View

Performance Table: CMC6S-MCTP-DD

MODEL NO.	Wattage	Voltage	Lumens	Color Temp.	LPW
CMC6S-MCTP-DD-WH	18W	120-277V	1440LM	3000K	80
CMC6S-MCTP-DD-BK	24W		1920LM	4000K	
	30W		2400LM	5000K	

Sample Ordering

Model Color Temp. Dimming Housing

CMC6S - MCTP - DD -

WH = White
BK = Black

Accessories:

Blank = No Option For Accessories

CMC6-TRM-AG = 6in Ceiling Mount Cylinder Trim, Anodized Gold

CMC6-TRM-BN = 6in Ceiling Mount Cylinder Trim, Brushed Nickel

CMC46-ULK = Uplight kit

CMC6-WPCK-WH = CMC6 Weatherproof Conversion Kit For Cord Or Down-Rod, White

CMC6-WPCK-BK = CMC6 Weatherproof Conversion Kit For Cord Or Down-Rod, Black

CMC6-HCDK-BK = 6in Ceiling Mount Cylinder Honeycomb Diffuser Kit, Black

CMC6-HCDK-AG = 6in Ceiling Mount Cylinder Honeycomb Diffuser Kit, Anodized Gold

CMC-CS-8FT-WH = Suspension Cable & Canopy Set For CMC Series, 8Ft, 5-Wire, White

CMC-CS-8FT-BK = Suspension Cable & Canopy Set For CMC Series, 8Ft, 5-Wire, Black

CMC-SRK-218-5C-WH = Universal Swivel W/ Rod Kit, 18 Or 36 Inches, 5-Wire, White

CMC-SRK-218-5C-BK = Universal Swivel W/ Rod Kit, 18 Or 36 Inches, 5-Wire, Black

CMC-SRK-224-5C-WH = Universal Swivel W/ Rod Kit, 24 Or 48 Inches, 5-Wire, White

CMC-SRK-224-5C-BK = Universal Swivel W/ Rod Kit, 24 Or 48 Inches, 5-Wire, Black

Factory-Installed Option:

Blank = No Option For Accessories

OPT-EM-8120AC = Emergency Backup with Extension Cylinder

ACCESSORIES:



CMC6-TRM-AG
Trim, Anodized Gold



CMC6-TRM-BN
Trim, Brushed Nickel



CMC6-HCDK-BK
Honeycomb Diffuser
Kit, Black



CMC6-HCDK-AG
Honeycomb Diffuser Kit,
Anodized Gold



CMC-CS-8FT-BK
Suspension Cable &
Canopy Set For CMC
Series, 8Ft, 5-Wire, Black



CMC-CS-8FT-WH
Suspension Cable &
Canopy Set For CMC
Series, 8Ft, 5-Wire, White

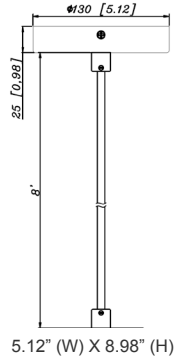
FACTORY-INSTALLED OPTION:



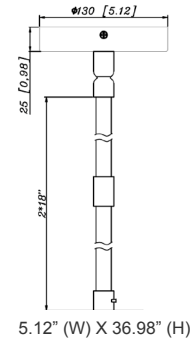
OPT-EM-8120AC



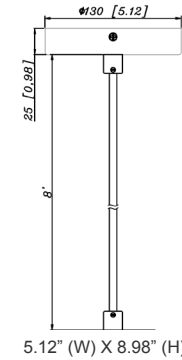
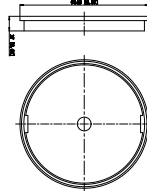
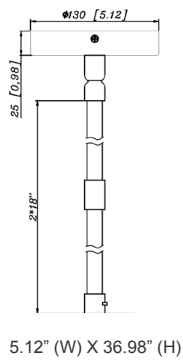
ACCESSORIES:



CMC6S-MCTP-DD-BK+CMC-CS-8FT-BK
CMC6S-MCTP-DD-WH+CMC-CS-8FT-WH



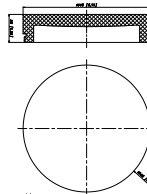
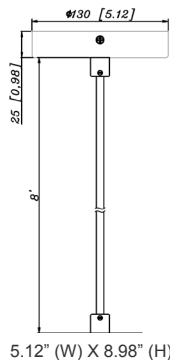
CMC6S-MCTP-DD-BK+CMC-SRK-218-5C-BK
CMC6S-MCTP-DD-WH+CMC-SRK-218-5C-WH



CMC6-MCTP-DD-BK+CMC-SRK-218-5C-BK+CMC6-WPCK-BK
CMC6-MCTP-DD-WH+CMC-SRK-218-5C-WH +CMC6-WPCK-WH



CMC6-MCTP-DD-BK+CMC-CS-8FT-BK+CMC6-TRM-AG
CMC6-MCTP-DD-WH+CMC-CS-8FT-WH+CMC6-TRM-BN



CMC6-MCTP-DD-BK+CMC-CS-8FT-BK+CWMC6-DL32
CMC6-MCTP-DD-WH+CMC-CS-8FT-WH+CWMC6-DL32

